



CEILING
LIGHTING
AMBIENCE



PREFACE

Network Architectural – Company Profile

Network Architectural is your trusted partner for innovative ceiling and facade solutions. Passionate about what we do, we listen, learn, and always strive to improve and innovate.

Helping you find the best solution for your specific designs, specifications and project requirements is our priority.

We pride ourselves on having a highly experienced and skilled team who work closely with you at all stages of the project lifecycle – from conception to specification through to project completion.

As the exclusive distributor of some of the industry's leading ceiling products, let us help you create high quality and safe buildings that stand out from the crowd.



durlum GmbH, Schopfheim, Germany



ZI Jena GmbH, Jena, Germany



durlum GmbH, production site Bexbach, Germany



HUCO NOTLICHT AG, Münchwilen, Switzerland



durlumen S.A., Vesoul, France



ZI Austria GmbH, Innsbruck, Austria



durlum India Pvt. Ltd., Gurgaon-Haryana, India

The durlum Group – Portrait

durlum develops and produces metal ceilings, lighting and daylight lighting systems for modern architecture. Together with our project partners, we create solutions that deliver a perfect synthesis between function and design. Solutions that make you feel at home.

As a globally active family business, we have been involved actively in Ceiling Lighting Ambience for more than 50 years, and we now have more than 350 people on our payroll staff. To accomplish this, we work innovatively, in an environmentally oriented manner, employing the very latest technologies and valuable materials for our product and project solutions.

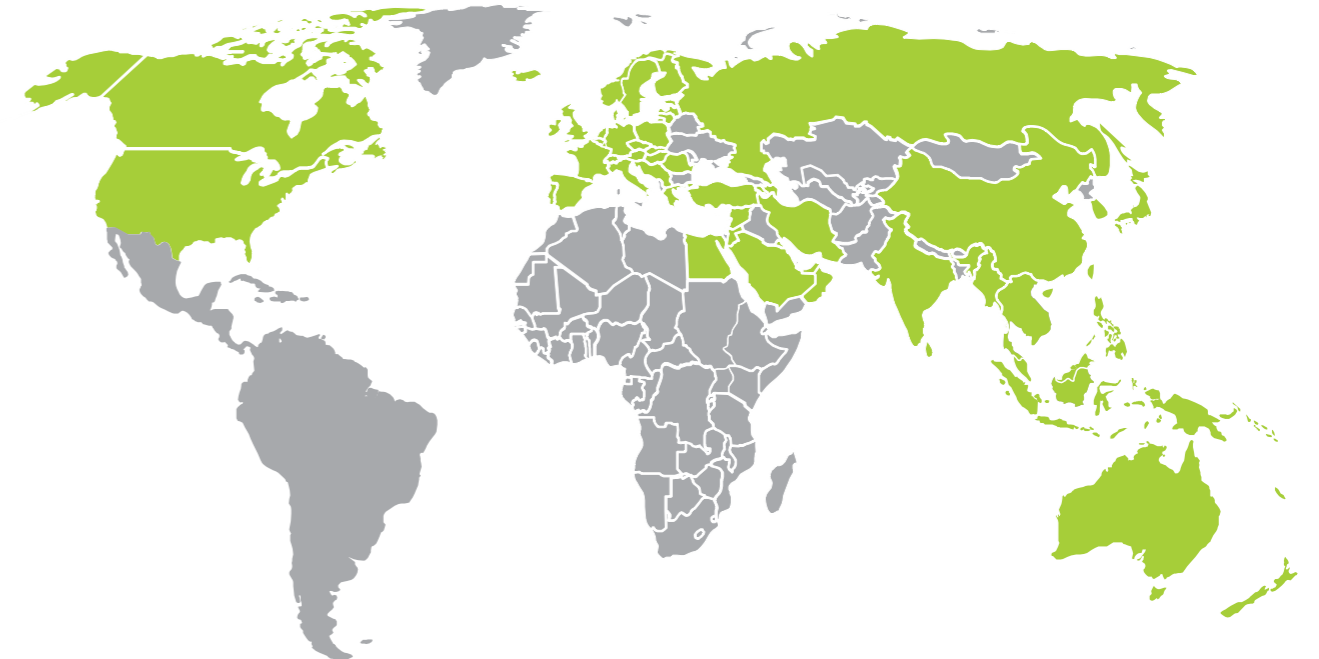
The company of durlum GmbH was founded in the Black Forest back in 1967. Over the following years and decades, other companies were acquired. In 2008, durlum Group GmbH was founded as a holding for the affiliated companies. The Group is divided into three main areas of activity, combining a total of eleven subsidiaries.

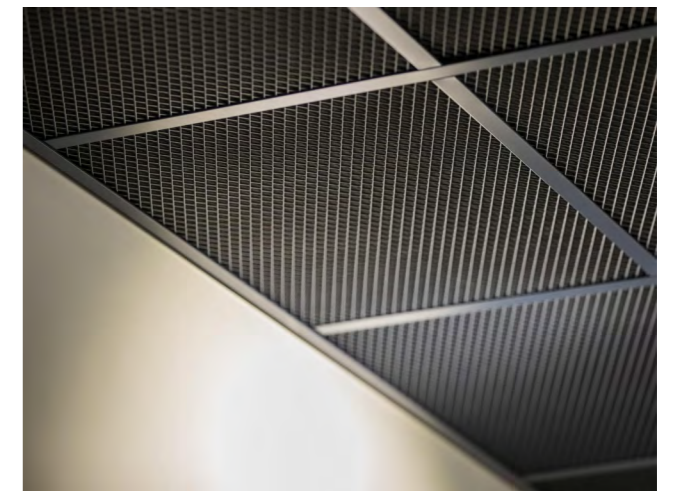
The first pillar of durlum Group GmbH is the CEILING LIGHTING AMBIENCE division. This main area of activity combines nine companies in Europe and Asia.

ZI Jena GmbH in Germany is involved in the metal processing area of our business. The plant for precision sheet metal technology was founded in 1991.

HUCO NOTLICHT AG in Switzerland was acquired by the durlum Group back in 1999. At that time, it traded as HUCO AG. This company manufactures emergency and safety lighting.

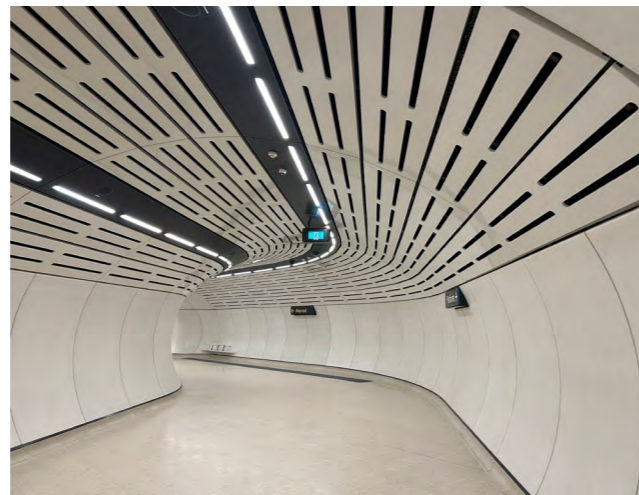
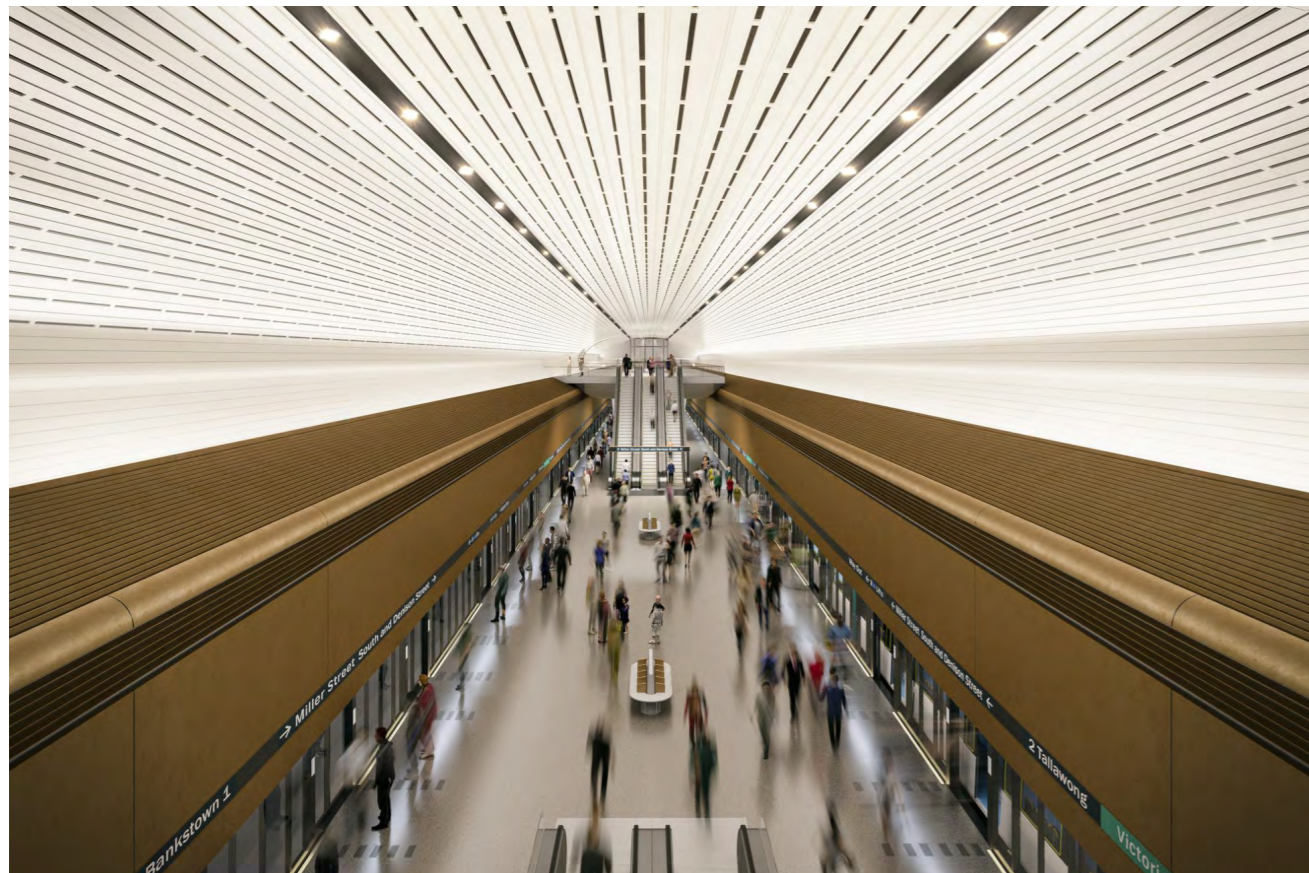
In Australia, durlum has been exclusively distributed by Network Architectural since 2020.



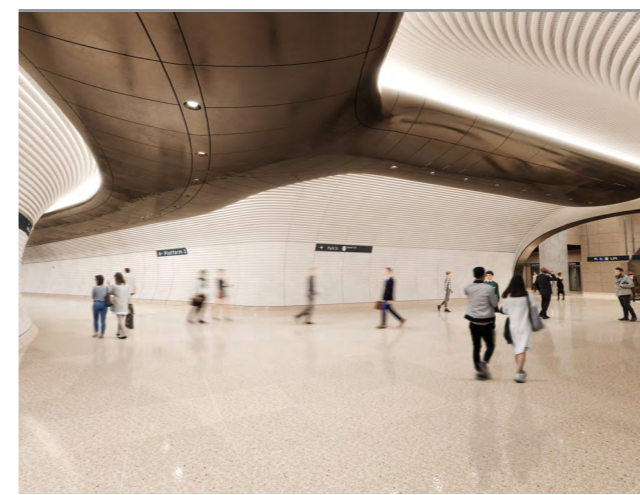


Kingswood TAFE
 durlum s1 clip-in tiles, durlum custom powder-coated expanded metal mesh panels in vibrant yellow, black durlum s7 double hook on service panels with opaque acrylic backing panels, and durlum S7 perforated mesh panels with opaque acrylic panels.

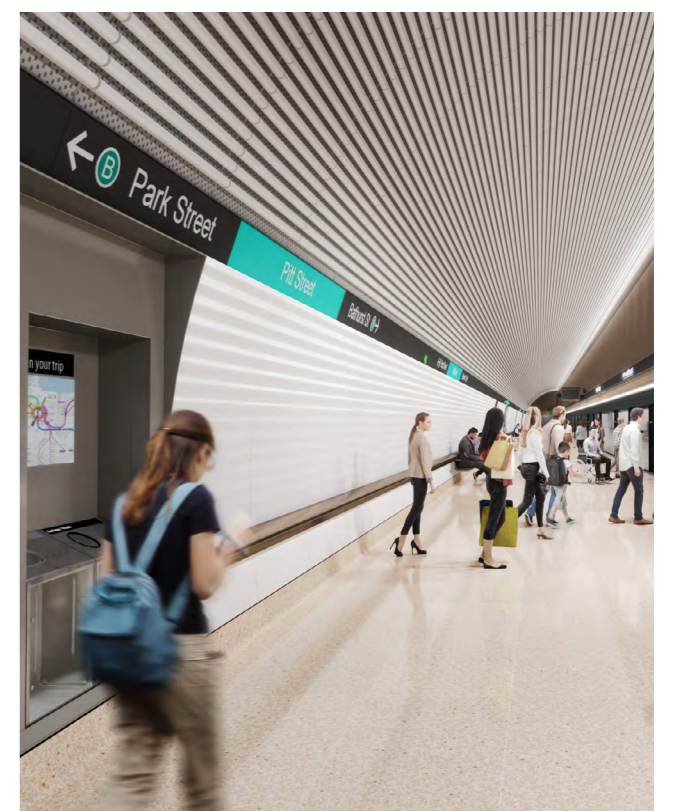
Cover image: Kingswood TAFE, Sydney Australia



Victoria Cross Station, Sydney Metro
7,000m² of durlum's bespoke designed S7 metal ceiling installed on curved cavern ceiling and walls.

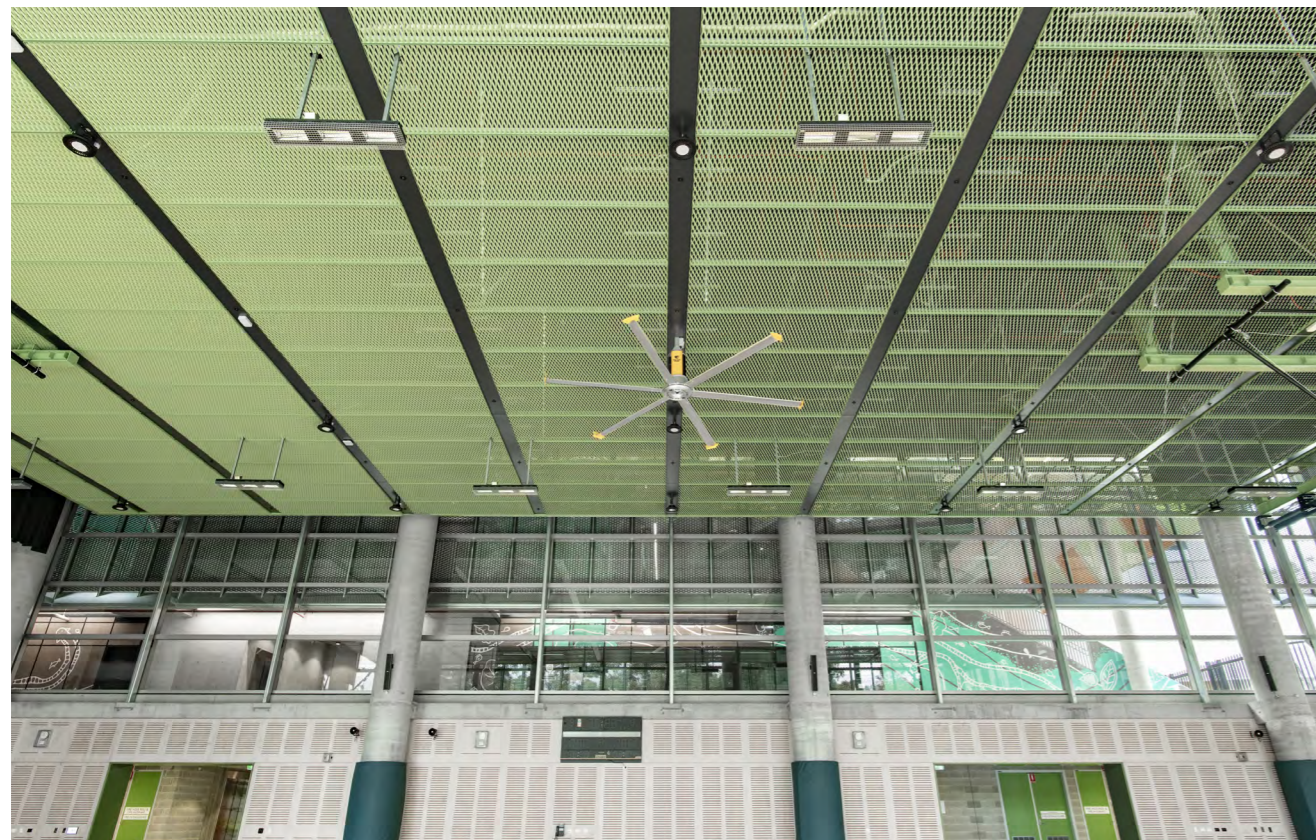
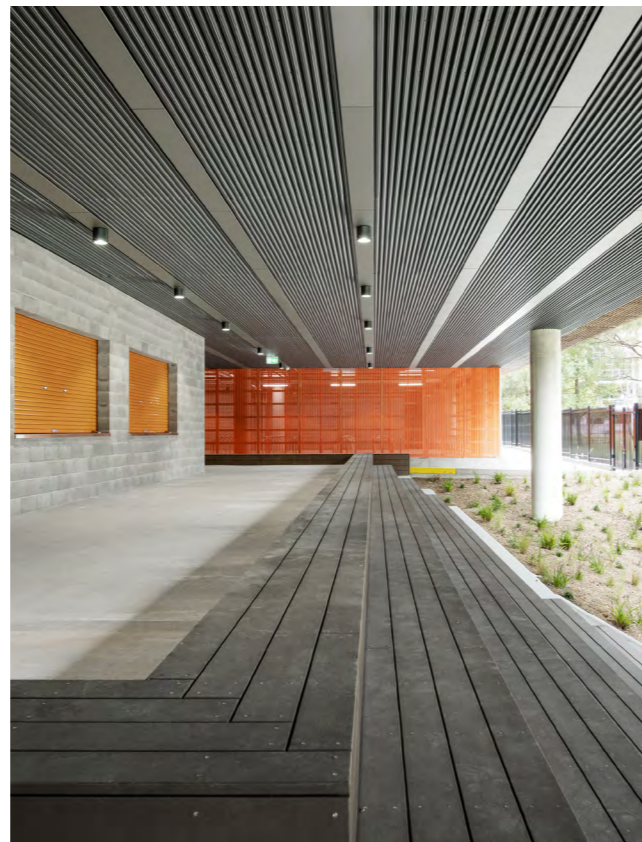


Gadigal Station, Sydney Metro
5,000m² of durlum bespoke curved bronze bulkhead and white horizontal aluminium tube ceiling and wall linings.



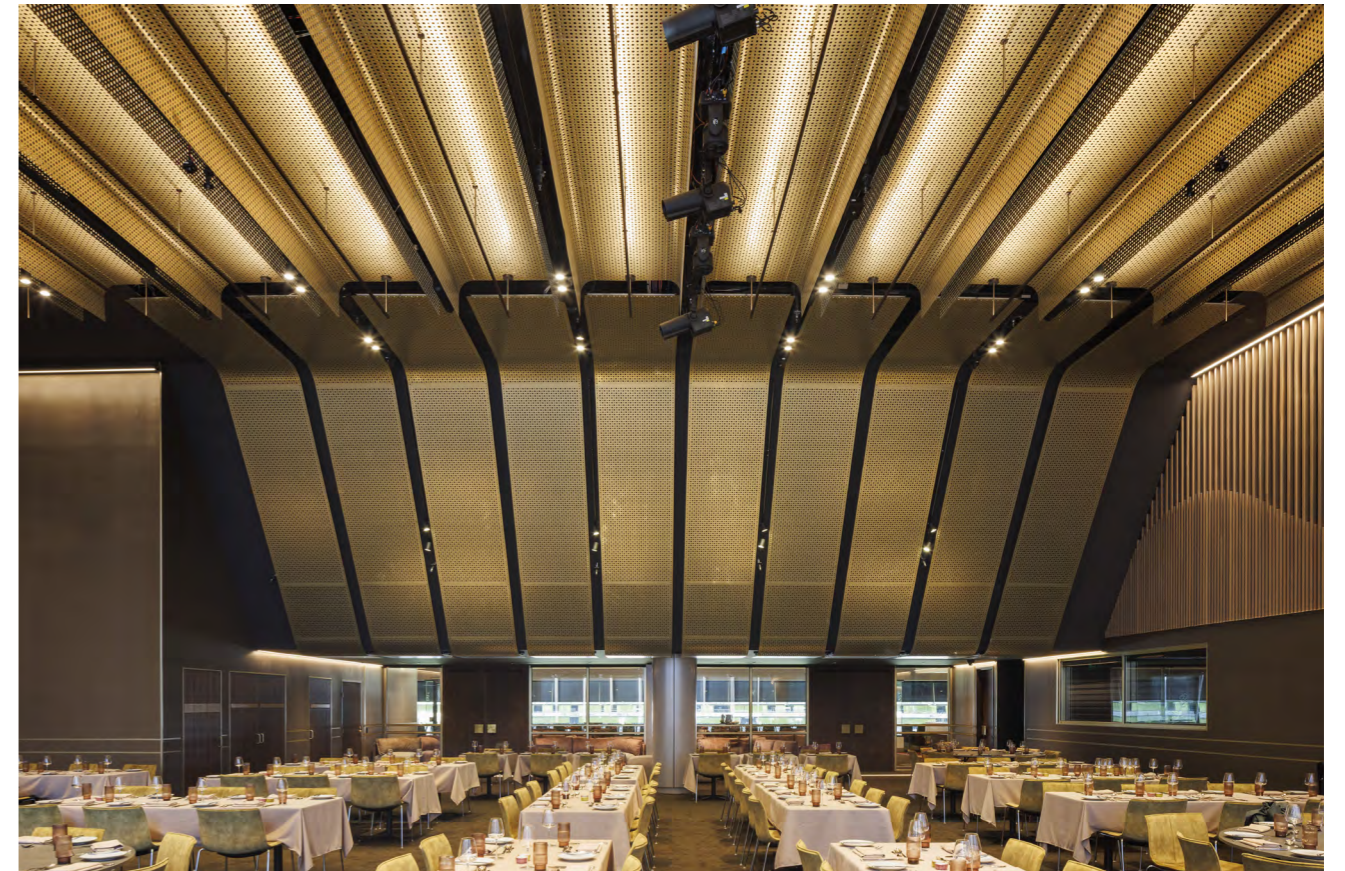


AMART Furniture Stores
durlum GEOTE open cell ceilings.

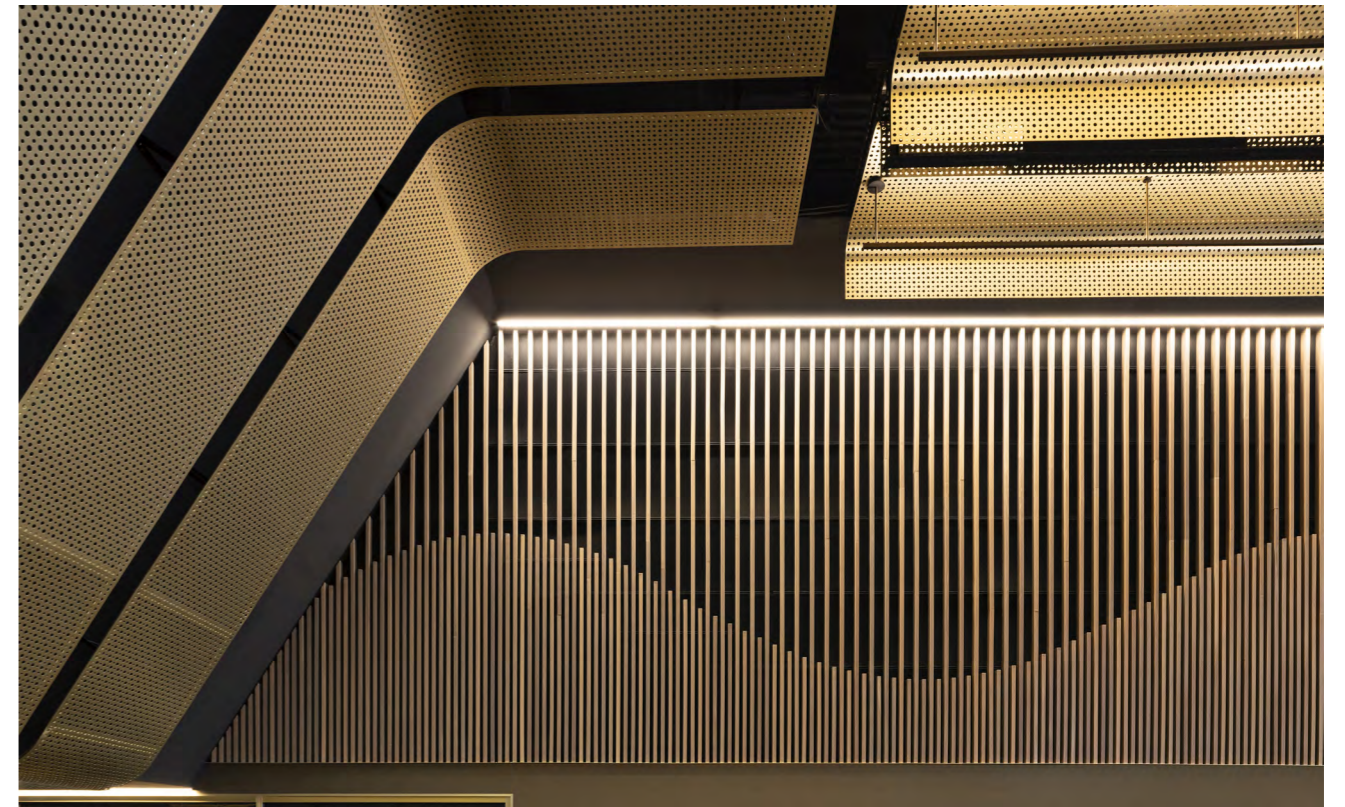


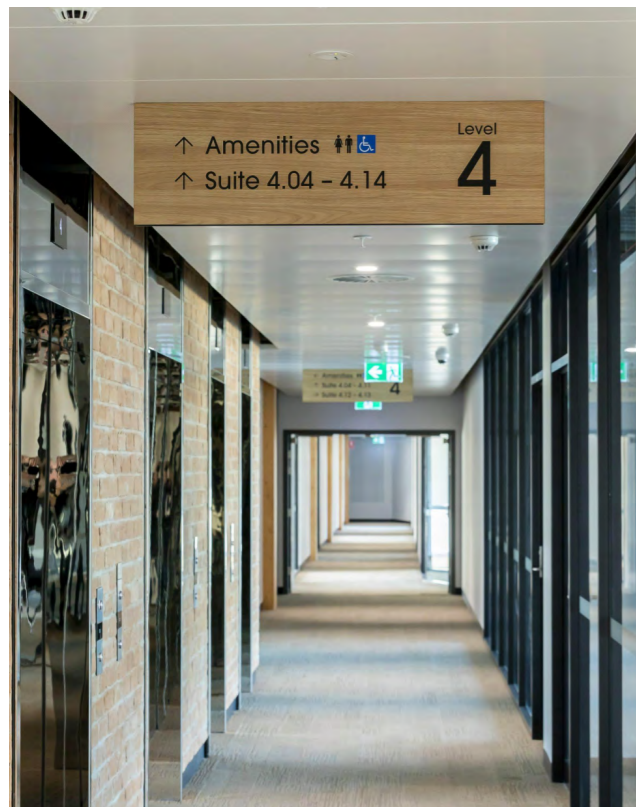
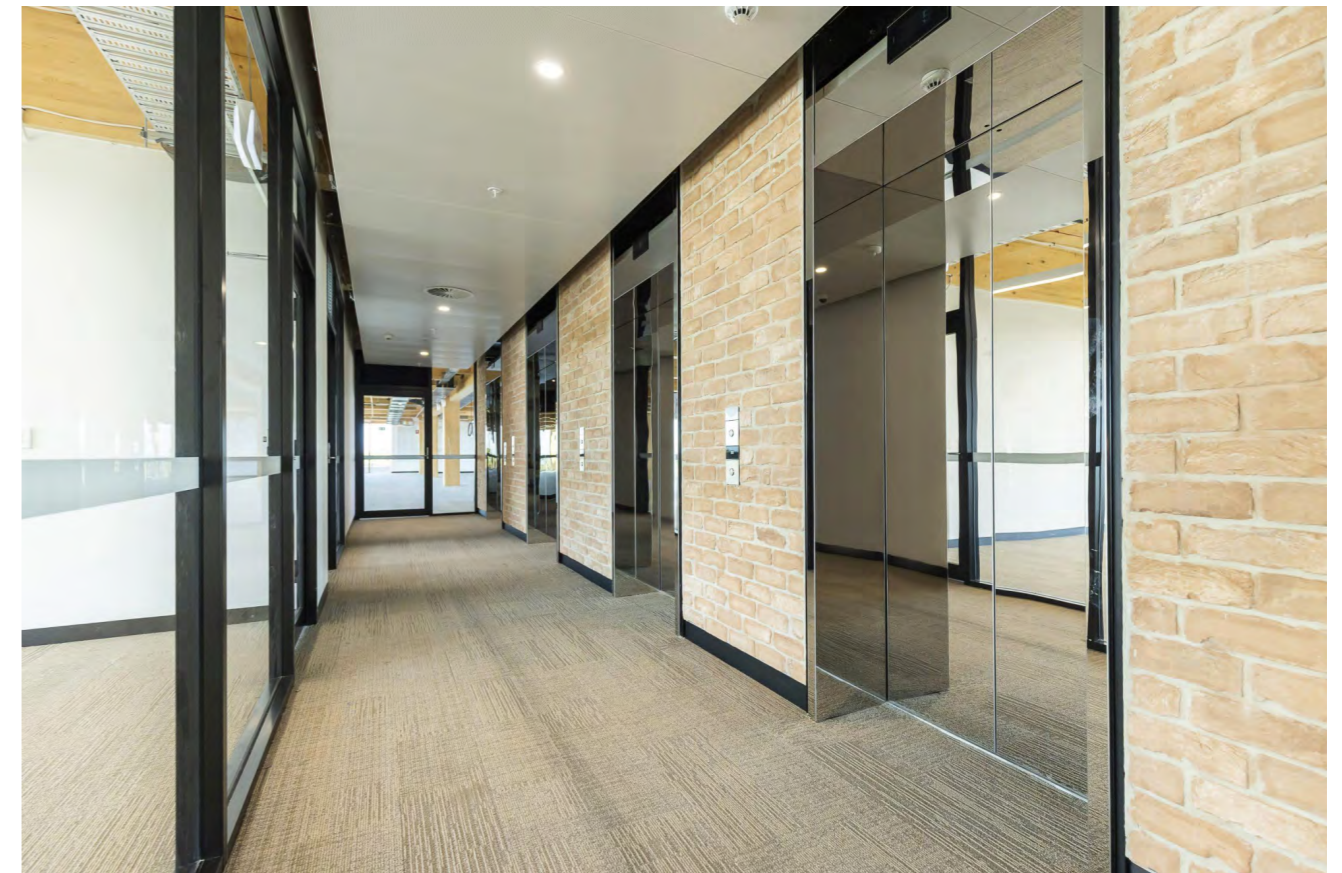
Meadowbank Education Precinct
6,500m² of bespoke design ceiling for the covered outdoor areas (learning & recreational), outdoor passageways, gymnasium and school hall.

Custom corrugated perforated ceiling and wall panels to match exterior brickwork, heavy-duty impact resistant mesh, durlum's S7 decorative stainless steel panels.

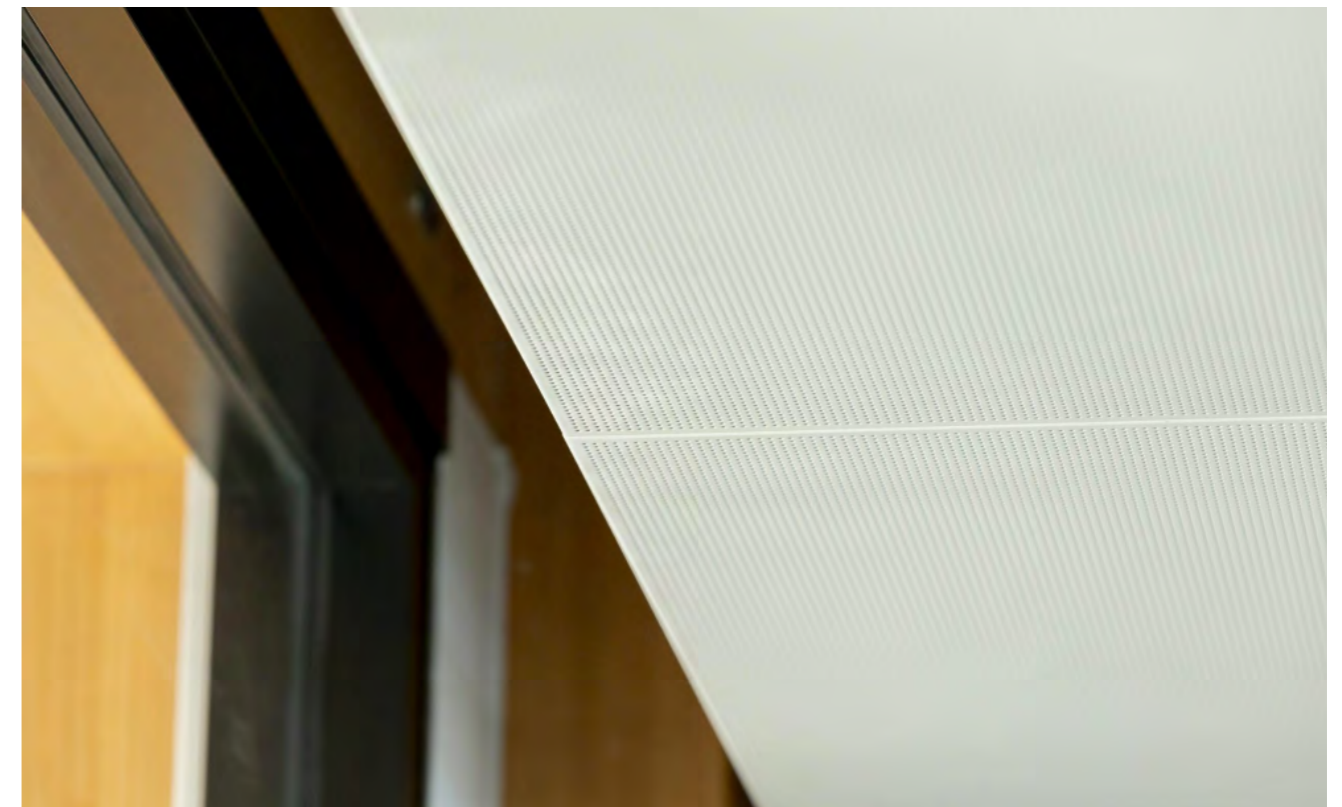


MARVEL Stadium
 durlum custom u-shaped anodised canoe rafts 300LM and durlum custom s-shaped metal raft ceilings.



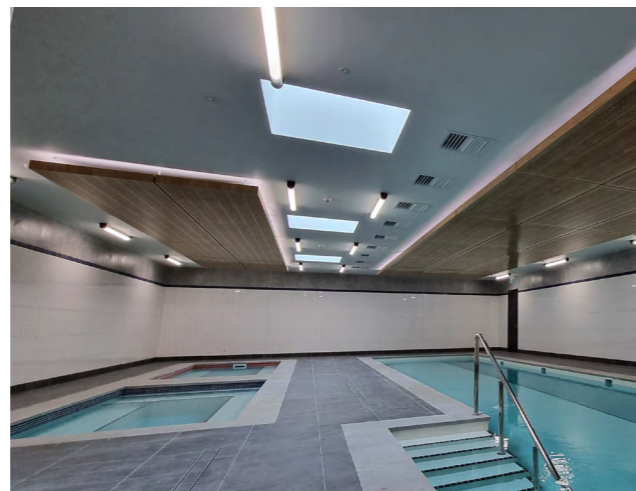
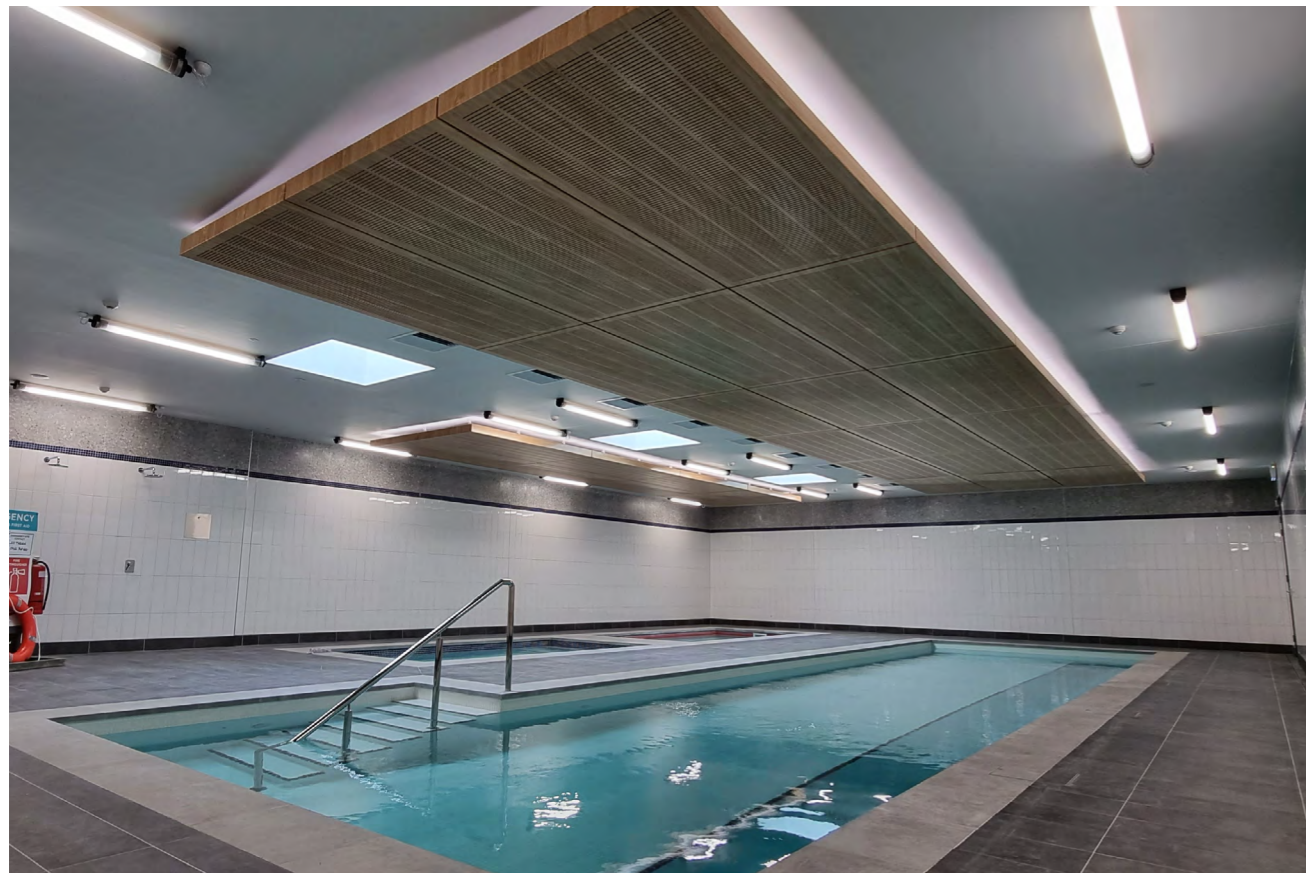


The BOND
 durlum S4 Hook-On Raft Ceiling Panels - 1.2mm BMT aluminium with perforation RG-L29 in RAL 9003 white with black Soundtex tissue inlay.

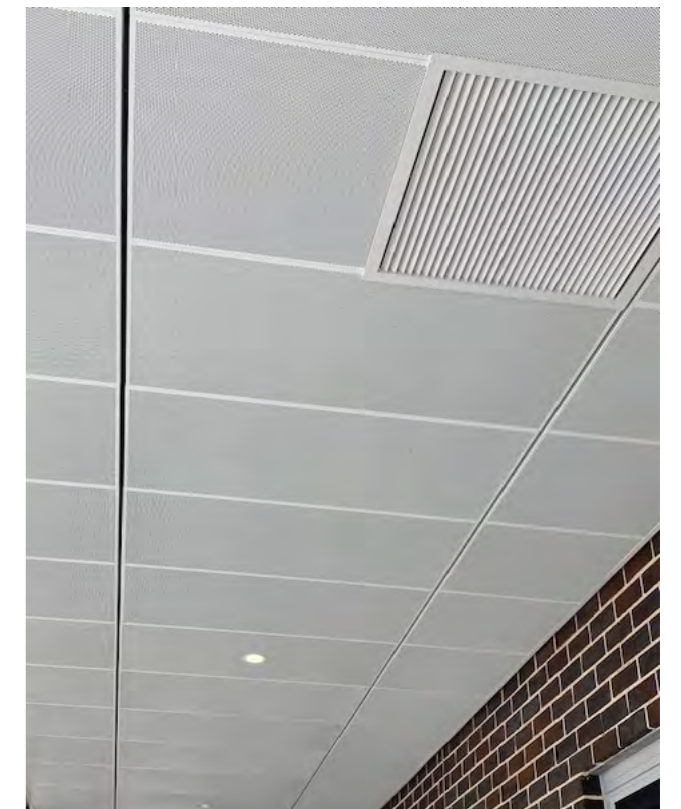




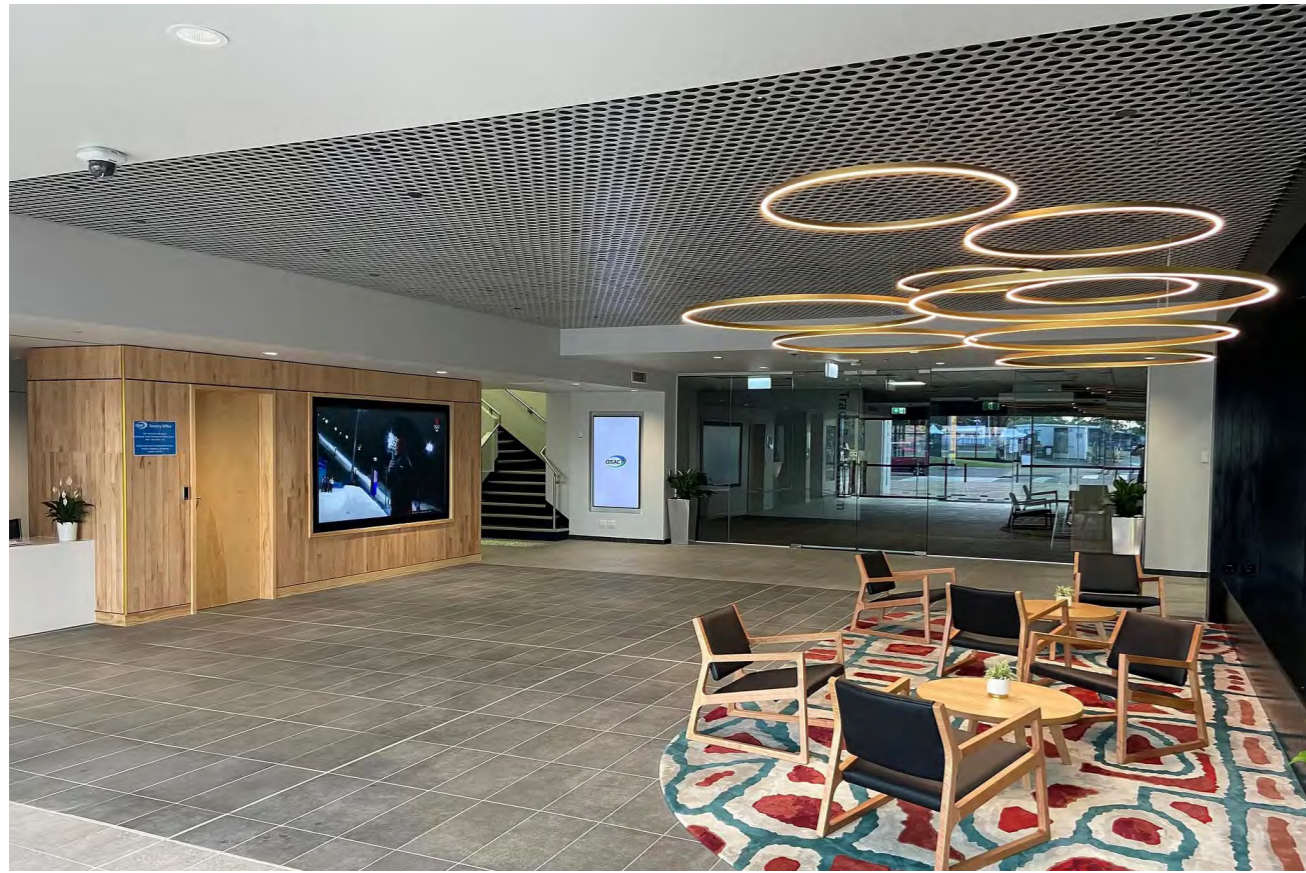
Castle Towers Shopping Centre
4,800m² of durlum's LIVA open cell louvre ceiling system with bespoke timber and bright pastel finishes.



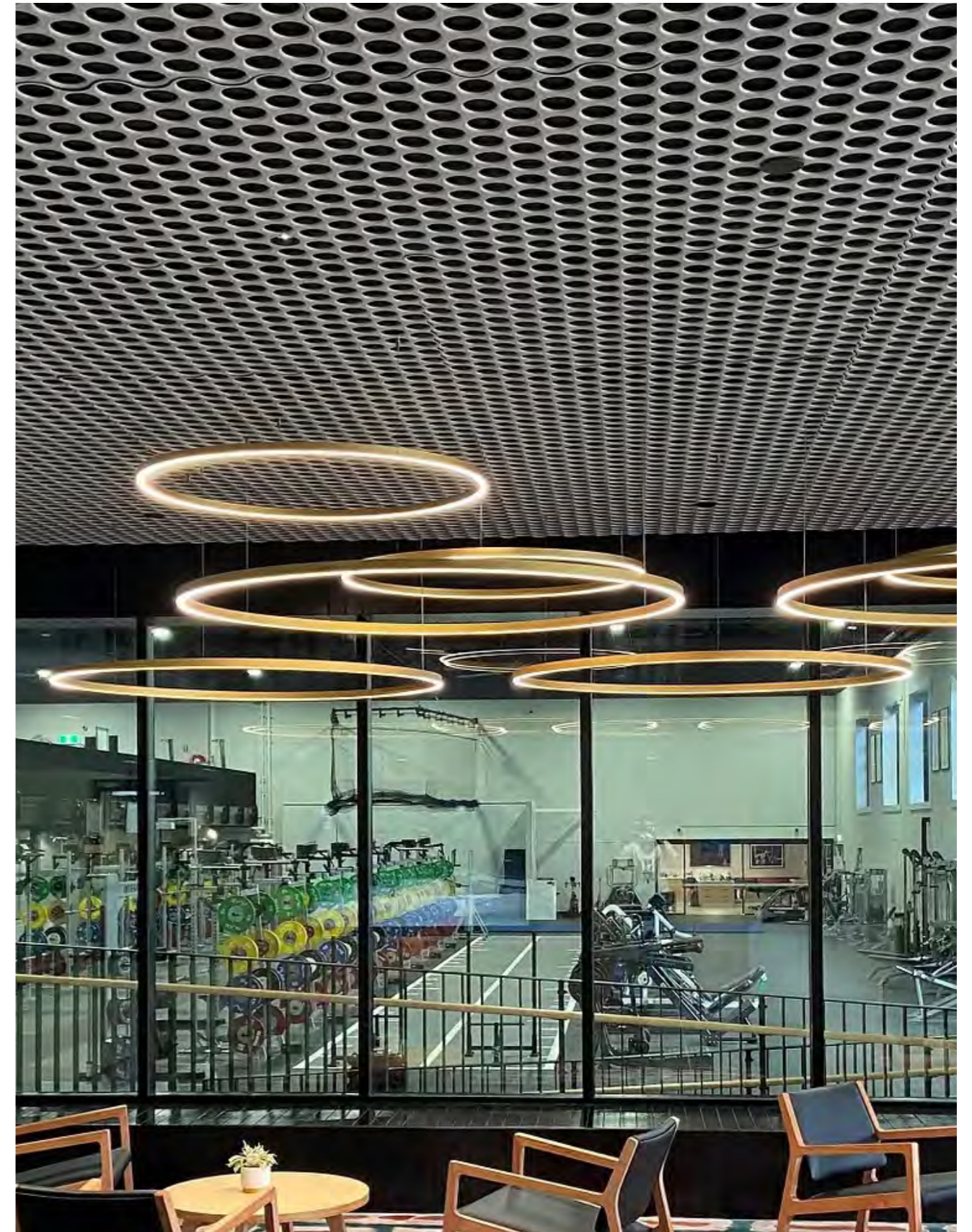
Newcastle Knights Centre of Excellence
durlum's S7 bespoke wood grain ceiling with slotted perforations.



Fairvale High School
1,200m² of durlum's S7 double hook-on ceiling system.



Queensland Academy of Sport
durlum's Loop Type 3 metal design ceiling.





Science Park Phase 1A, B
10,000m² of custom design metal ceiling and internal wall cladding.



Gwanglim Monestary Center
POLYLAM® TYPE X vertical baffle system, S5.2-100 tartan grid ceiling
and S10 triangular ceiling.



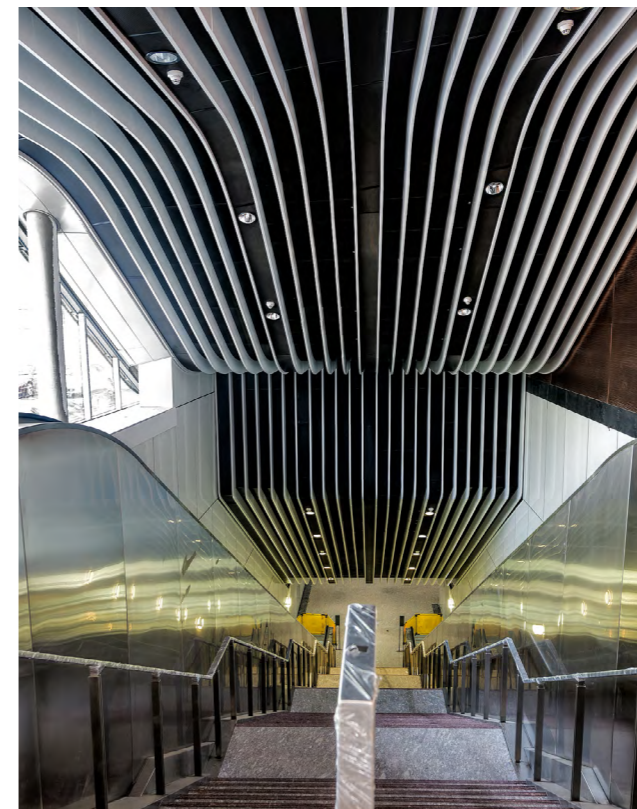
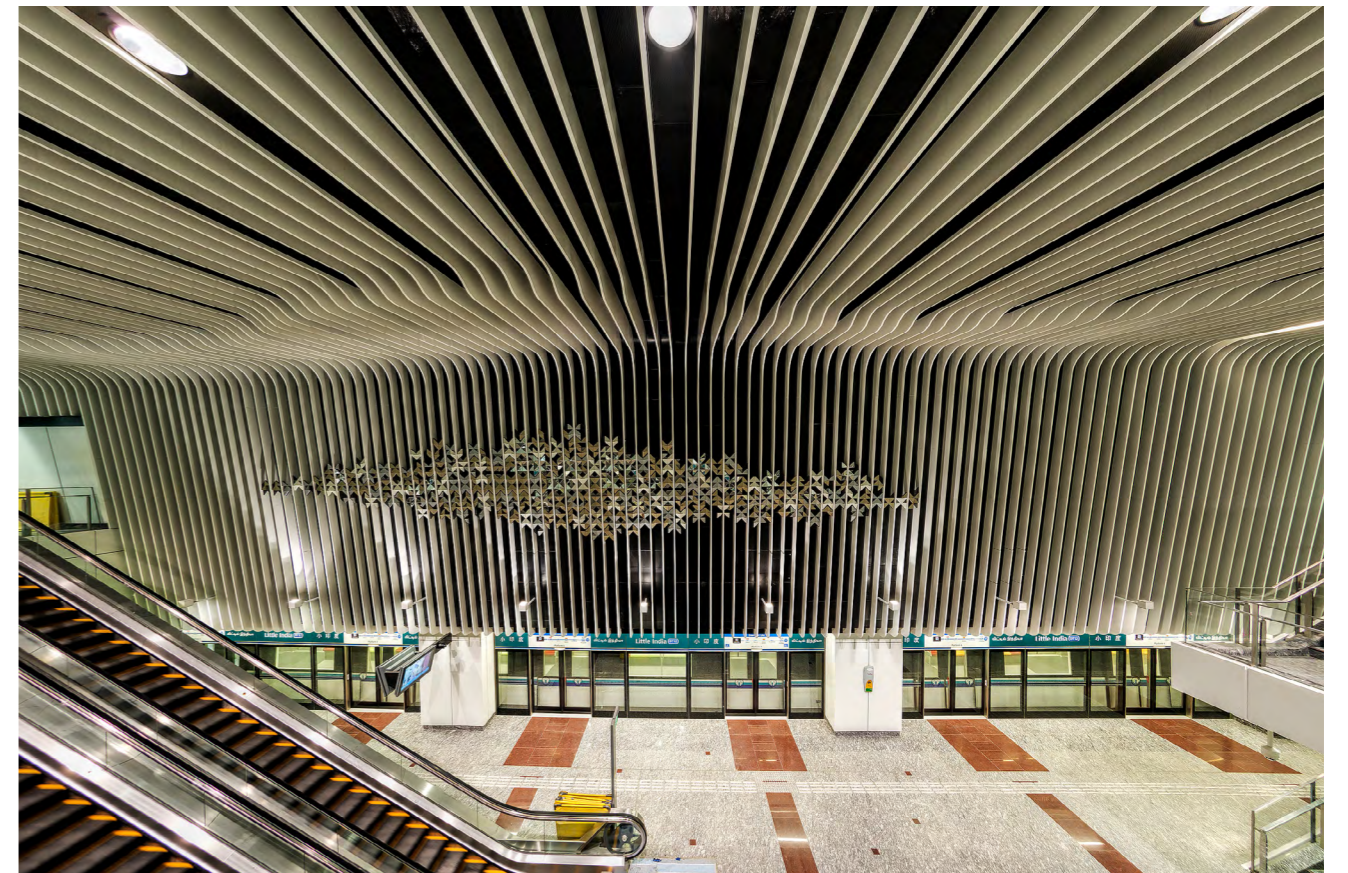
Geylang Bahru MRT station
200m² of S4 RHOMBOS and 3,900 m² of S4 hook-on ceiling.



Jalan Besar MRT Station
4,400m² of S4 hook-on ceiling, 630 m² of 300S strip ceiling.

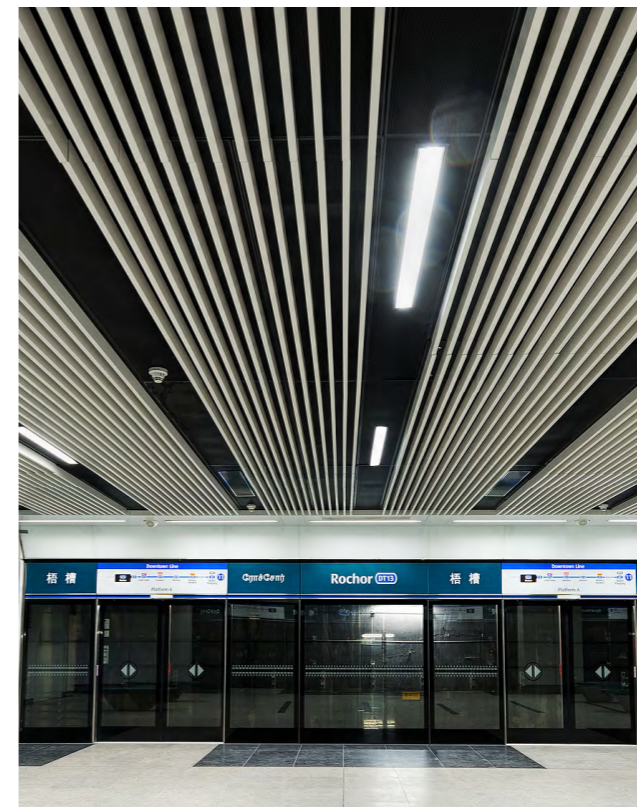
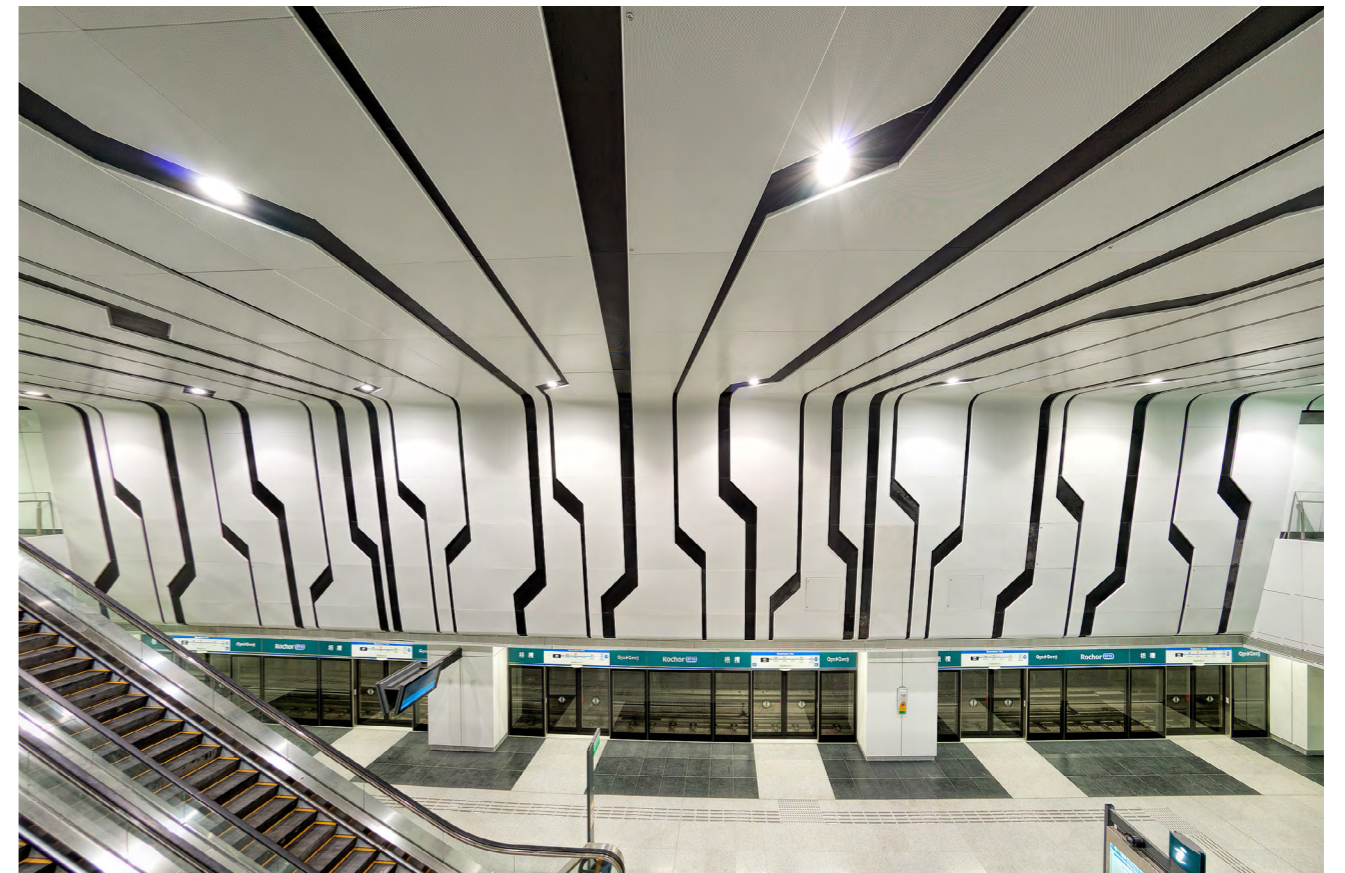


Kaki Bukit MRT station
2,400m² of S4 hook-on ceiling, 600 m² of 300S-shape strip ceiling, 600 m² of POLYLAM® TYPE X vertical baffle system.

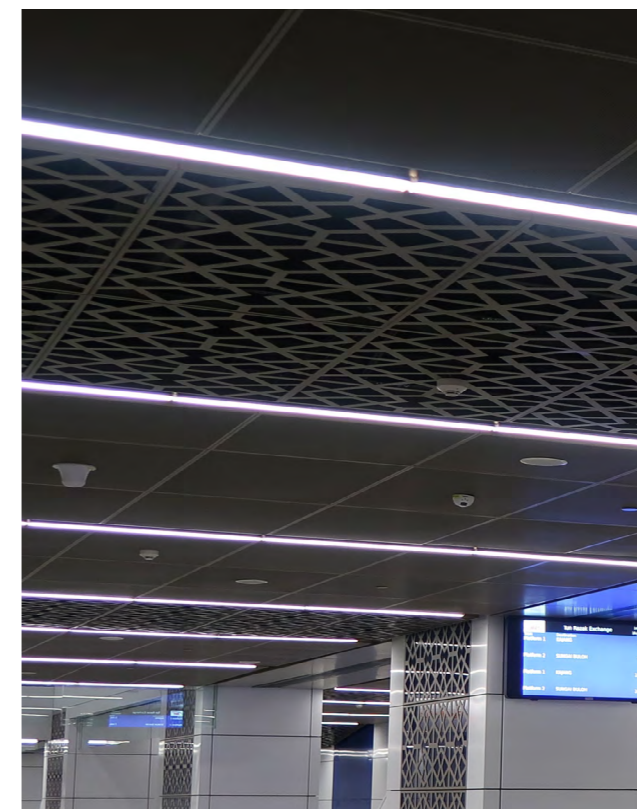


Little India MRT Station
1,000m² of vertical baffles aluminium 2.0 mm; width: 30 mm, height: 250 mm; powder-coated in RAL 9003.

4,000m² of curved vertical baffles in different lengths laid horizontally and vertically; aluminium 2.0 mm; powder-coated in RAL 9003; can be hinged open in the system.



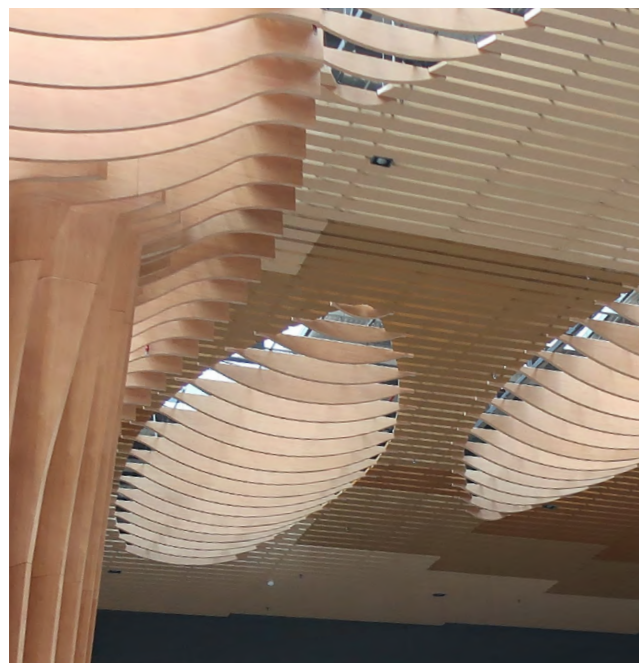
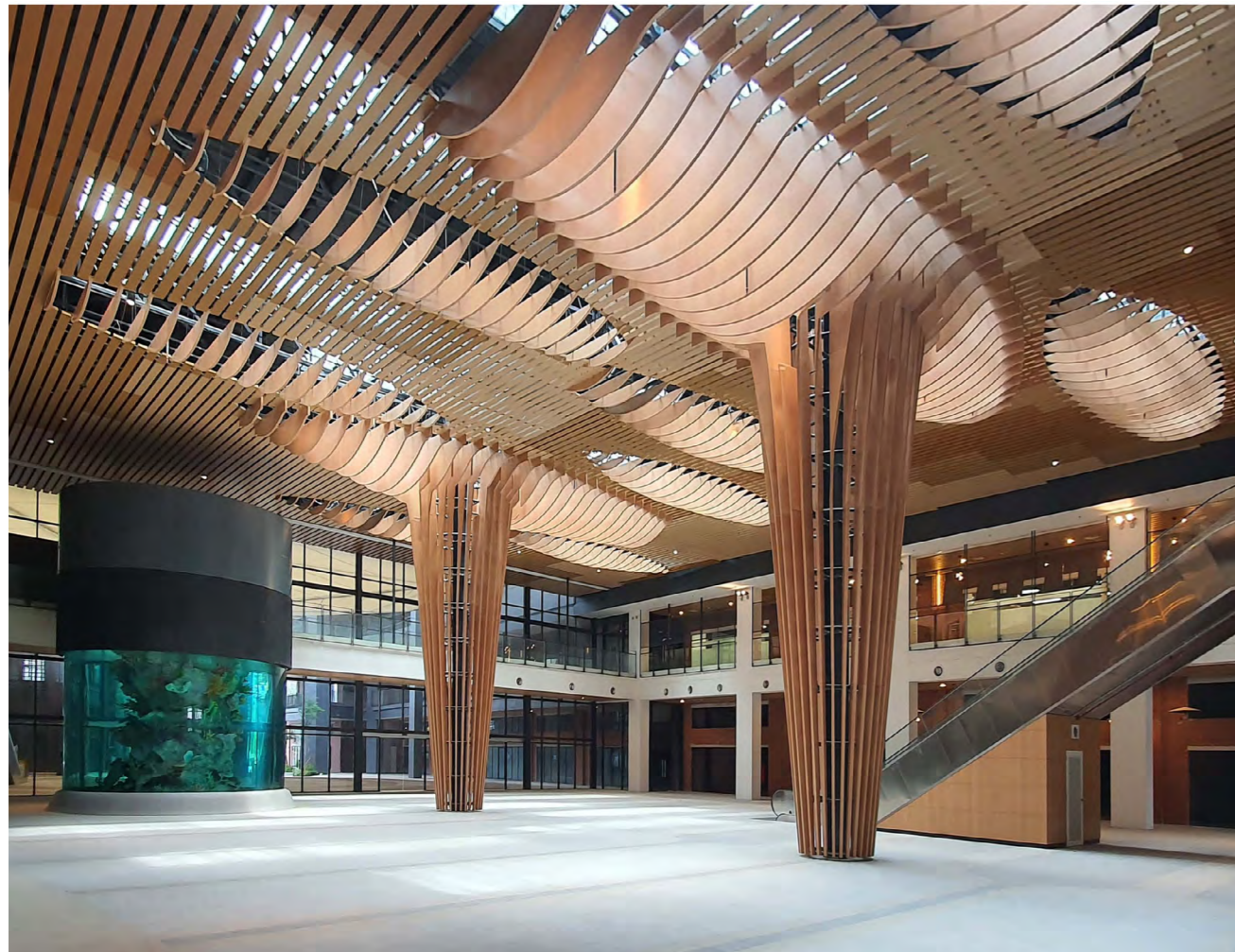
Rochor MRT Station
2,000m² of aluminium panels in different lengths 2.0 mm; powder-coated in RAL 9003; individually perforated.
800m² of vertical baffles aluminium 1.0 mm; width: 30 mm, height: 80 mm; powder-coated in RAL 9003; can be hinged open in the system.



Kuala Lumpur MRT Line1, seven underground stations
 30,544m² of linear ceilings with S4 suspension/hook system; 2.0 mm aluminium panels; various panel sizes; some of them perforated and backed with black fabric; powder-coated in RAL 1035.

2,120m² of S4 RHOMBOS expanded metal ceiling system 1.5 mm thickness of aluminium sheet metal; panel sizes [LxW]: 1050 x 925 mm; Mesh size: 25 x 12 x 2.0 x 1.5 mm; in black, powder-coated.

4,843 linear meters of vertical baffles made of 1 mm aluminium; width 50 mm, length 2000-3000 mm, height 200 mm; powder-coated in RAL 1035; perforated right through; backed with black fabric.



Gravity 8 Shopping Mall – Klang

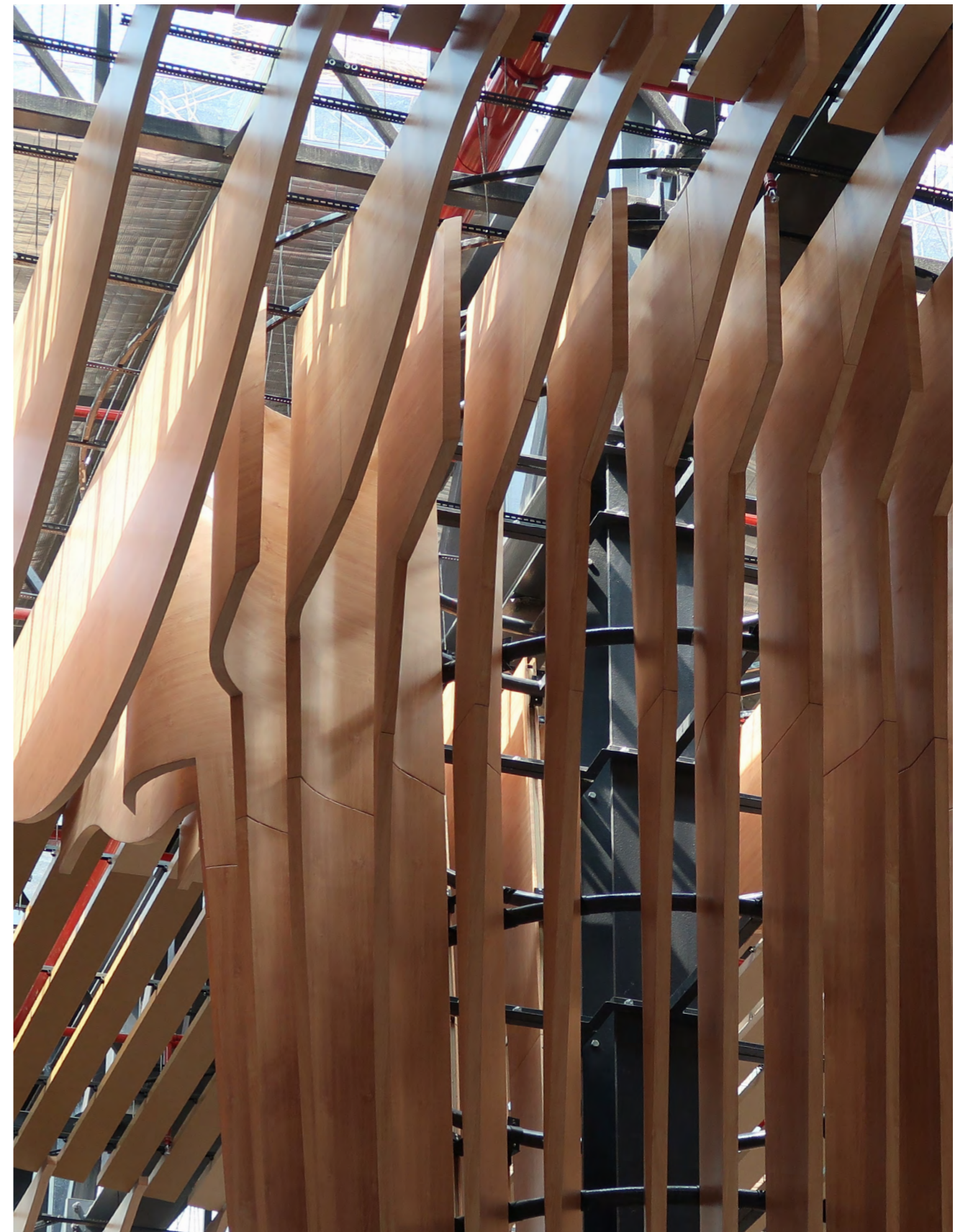
This project we supply 180B linear strip ceiling in woodgrain powder coating finish for the corridor area, and 3 different shades of brown for the main Atrium space of the shopping mall.

In the main Atrium there are 10 nos of skylight opening which bring in natural day light.

Curve Polylam were used as ceiling and sun shading louvers over the the skylight ovals with 2 columns cladded with curve and tapering Polylam sections creating a radiating arrangement fixed column rings stretching from ground to ceiling.

All the curve Polylam baffles were made using 2mm thick aluminium with Woodgrain powder coating surface.

Total quantity of ceiling installed were around 2,000m².





Mactan-Cebu Airport, Philippines
20,000m² of POLYLAM® TYPE X vertical baffle system, S4 RHOMBOS expanded metal ceiling, Binnacle & Retail Cladding, Trellis.

All measurements in inches and mm. We reserve the right to make alterations in dimensions or design.

Errors excepted. All rights reserved.

The information contained in this document is subject to change without notice. Network Architectural makes no warranty of any kind with respect to this information.

Network Architectural shall not be liable for any direct, indirect, incidental, consequential, or other damage alleged in connection with the furnishing or use of this information.

No part of this document may be photocopied, reproduced, or translated to another language without the prior written consent of Network Architectural.

© Network Architectural 2024



Network Architectural

71 Marigold Street

Revesby NSW 2212

T +61 2 8316 5000

www.networkarchitectural.com.au